

TAPESTRY TREASURES

EXHIBITION CATALOGUE

**OCTOBER 31, 2024 - JANUARY 25, 2025
AUSTRALIAN TAPESTRY WORKSHOP**

**AUSTRALIAN
TAPESTRY
WORKSHOP**

CREATIVE VICTORIA





Step into the world of tapestry at the Australian Tapestry Workshop as we unveil treasures from our stock collection for sale. This exhibition features a diverse array of tapestries that blend excellence in craft with designs from leading contemporary Australian and international artists. Each piece tells a story through its intricate patterns, textures, and colours. Each tapestry is unique and never to be repeated. The tapestries deliver fresh perspectives on the artists' practice and are the outcomes of sensitive collaboration with the skilled ATW weavers

Artists include Brook Andrew, Mike Brown, John Cattapan, John Coburn, Lesley Dumbrell, Troy Emery, Belinda Fox, Roger Kemp, Julian Martin, Arlene Textaqueen, Guan Wei and John Young amongst others.

Whether you're a tapestry enthusiast, a collector, or simply curious about the fine art of weaving, this exhibition promises to captivate your senses and spark your creativity. All pieces in the exhibition are available for viewing and purchase.

Your support in purchasing a tapestry from the ATW will assist us in creating more opportunities for weavers and artists to collaborate on new tapestry commissions.

SIDE GALLERY





'Big Kangaroo Urn', 2021
designed by Troy Emery
woven by Emma Sulzer
wool and cotton, 72 x 56 cm
\$18,500



'Schiaparelli Paris Project', 1998
designed by Alun Leach-Jones
woven by Irene Creedon
wool and cotton, 100 x 100 cm
\$8,000 SOLD



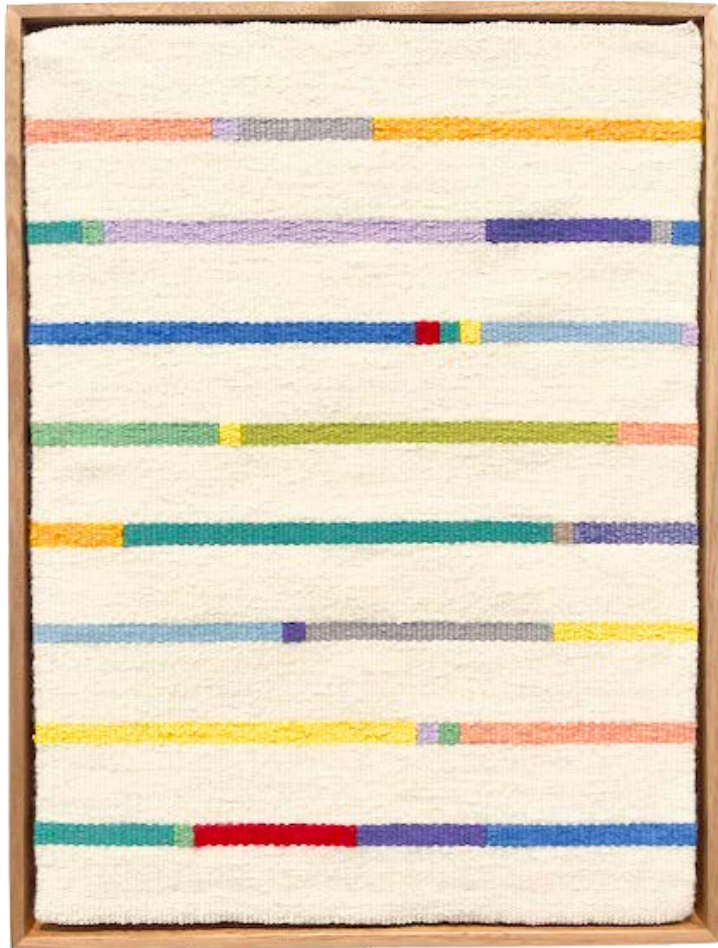
'Pat', 1979
designed by Richard Larter
woven by Alan Holland
wool and cotton, 52.5 x 42.5 cm
\$2,500



'Colour Study', 1982
designed by Chris Pyett
woven at the ATW
wool and cotton, 137 x 70cm
\$1,450



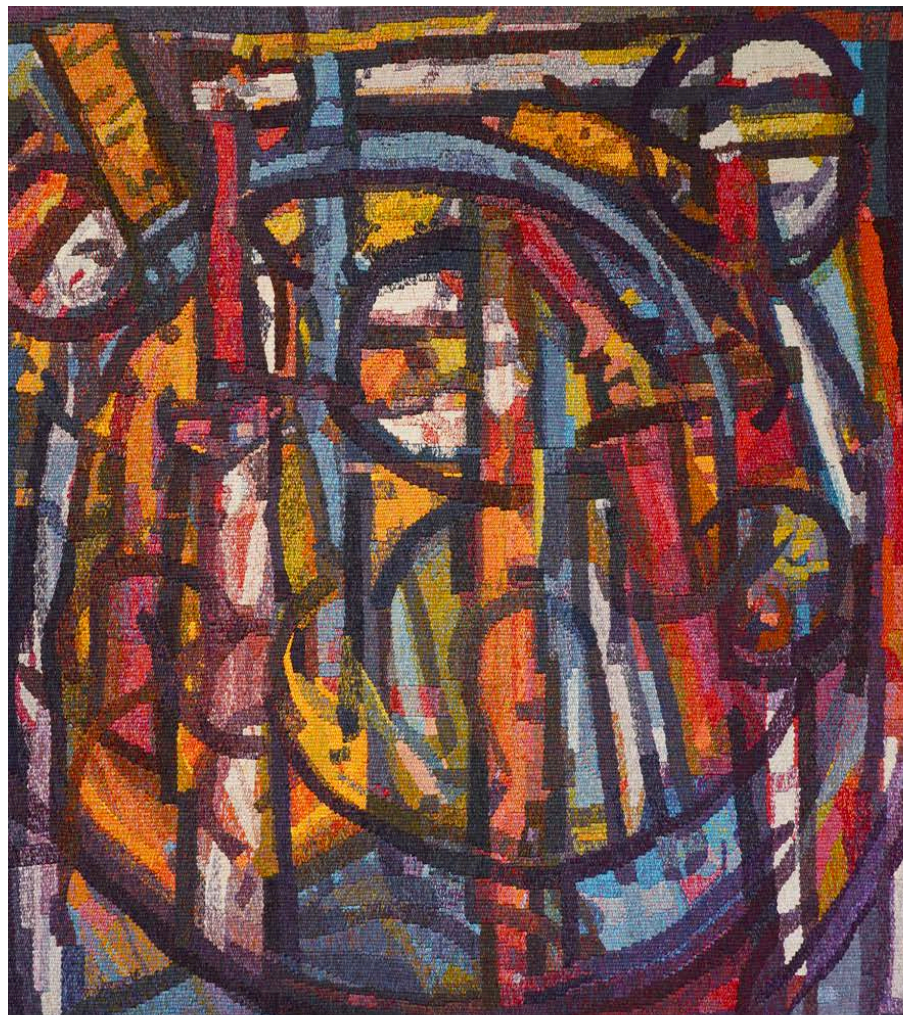
'Untitled', 1978
designed by Rollin Schlicht
woven at the ATW
wool and cotton, 138 x 193 cm
\$33,000



'Experimental Study', 1978
designed by Lesley Dumbrell
woven by Ian Young
wool and cotton, 58 x 44 cm
\$2,800



'Park', 1982
designed by John Hopkins
woven by Pamela Joyce and
Sonja Hanson,
wool and cotton, 162 x 228cm
\$30,000



Study for 'Release', 1985
designed by Roger Kemp
woven by Leonie Bessant, Pamela Joyce and Irja West
wool and cotton, 126 x 144 cm
\$16,500

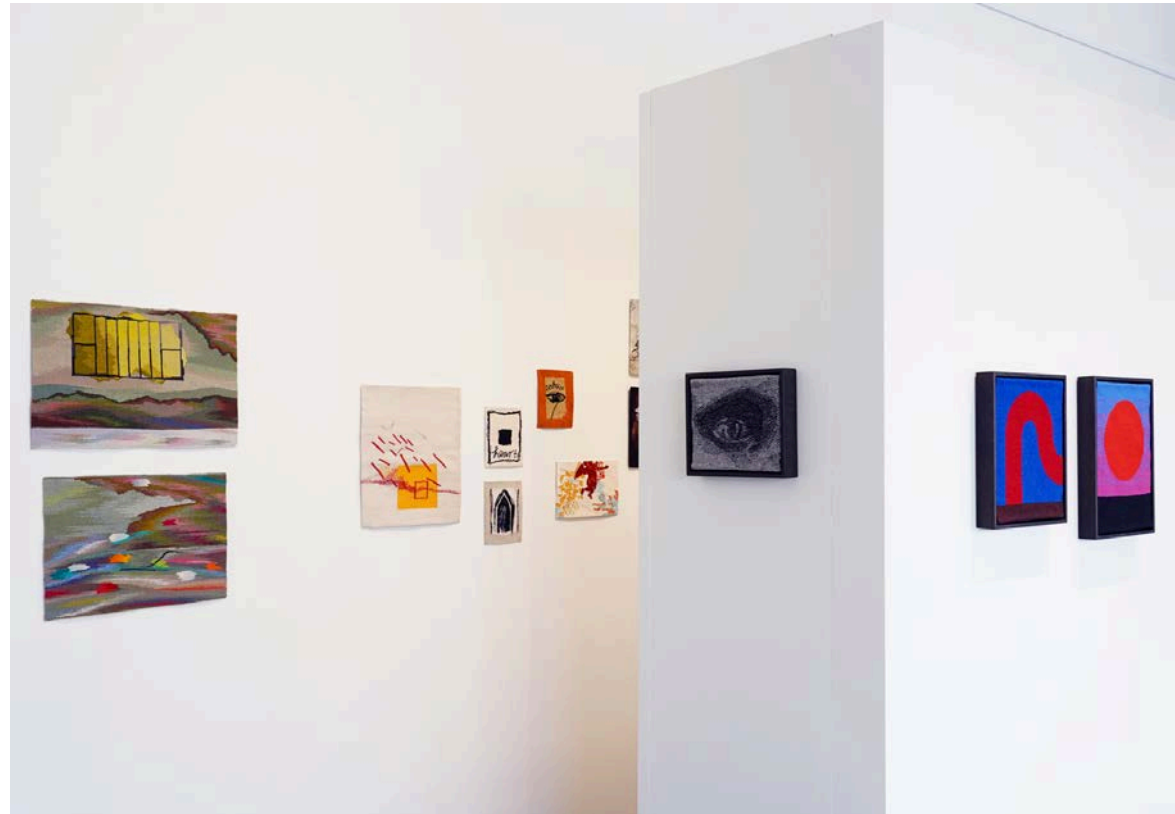


'Observation de la nature', 1995
designed by Alan Davie
woven by Irene Creedon
wool and cotton, 170 x 200 cm
\$25,000



'Swimmer', 2000
designed by Davida Allen
woven by Claudia Lo Priore
wool and cotton, 120 x 180cm
\$9,500

FRONT GALLERY





1. 'Interpretive Study - Melbourne'
Designed by Murray Walker, woven at the ATW
wool and cotton, 57 x 39 cm
\$660 SOLD



4. 'Heart'
Designed by Karen Papacek,
woven by Irja West
wool and cotton, 20.5 x 16cm
\$350 SOLD



2. 'Interpretive Study - Melbourne'
Designed by Murray Walker, woven at the ATW,
wool and cotton, 50 x 37.5 cm
\$660



5. 'House'
Designed by Karen Papacek,
woven by Merrill Dumbrell,
wool and cotton, 21 x 15.5cm
\$350 SOLD



3. 'Experimental Study'
Woven at the ATW,
wool and cotton, 37.5 x 45 cm
\$450



6. 'Witness'
Designed by Karen Papacek,
woven by Irja West,
wool and cotton, 20.5 x 16,
\$350



7. 'Suitable tales - IV', 2008
Designed by Nusra Latif Qureshi,
woven by Amy Cornall
wool and cotton, 20.5 x 28.5,
\$900



10. 'Mungo Horizons', 1995
Designed by Bruno Leti,
woven by Georgina Barker,
wool and cotton, 17 x 15 cm,
\$300



8. 'Outside - in', 2008,
Designed by Belinda Fox,
woven by Chris Cochius,
wool and cotton, 28.4 x 23.2,
\$800



11. 'Study - Finding Kenneth Myer'
Designed by John Young,
woven by Milena Paplinska,
wool and cotton, 23 x 24.5cm,
\$1,800



9. 'Arrival'
Designed by Belinda Fox,
woven by Caroline Tully,
wool and cotton, 30 x 23.5 cm,
\$800



12. 'Study for "Ou est la fete #3', 2008
Designed by Andrew Cooks,
woven by John Dicks,
wool and cotton, 19.5 x 13.3,
\$500



13. 'Grass # 3' 2008
Designed by Sue Lovegrove,
woven by Chris Cochius,
wool and cotton, 21.8 x 16.5
\$800



16. 'Grass # 4', 2008
Designed by Sue Lovegrove,
woven by Chris Cochius,
wool and cotton, 17 x 22cm,
\$800



14. 'Study - Nanjing Library'
Designed by John Young,
woven at the ATW
wool and cotton, 28 x 18 cm,
\$1,800



17. 'Study - Finding Kenneth Myer'
Designed by John Young,
woven by Milena Paplinska,
wool and cotton, 23 x 24.5,
\$1,800



15. 'Ice # 1' 2008
Designed by Sue Lovegrove,
woven by Chris Cochius,
wool and cotton, 22 x 16.2 cm,
\$800



18. 'Experimental wattle'
Designed by Maree Cook,
woven at the ATW,
wool and cotton, 58 x 61.5 cm,
\$1,800



19. 'Experimental Study'
Woven by Sophie Morris,
wool and cotton, 20 x 8 cm,
\$250



22. 'Untitled (Cactus)', 1999
Designed by Bob Jenyns,
woven by Caroline Tully,
wool and cotton, 20.5 x 13.5 cm,
\$350 SOLD



20. 'Motherhood & Child #2 Blue Bird', 1999
Designed by Judi Singleton,
woven by Hannah Rother,
wool and cotton, 13.5 x 13,
\$150 SOLD



23. 'Experimental Study'
Woven at the ATW,
wool and cotton, 10.5 x 19 cm
\$100 SOLD



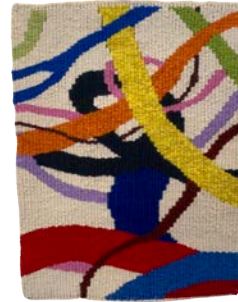
21. 'Yellow Cheek Parrot'
Woven by Karlie Hawking,
wool and cotton, 22 x 25 cm,
\$440



24. 'Interpretive Study - Dulka Warngiid'
Designed by Bentinck Island Artists,
woven by Leith Maguire,
wool and cotton, 27 x 24.5 cm,
\$300 SOLD



25. 'Untitled (Red Footy Jumper)', 1999
Designed by Bob Jenyns, woven by Caroline Tully,
wool and cotton, 19 x 13 cm,
\$350 SOLD



28. 'Interpretive Study - Gordion Knot'
Designed by Keith Tyson,
woven by Sophie Morris,
wool and cotton, 36 x 29 cm,
\$450



26. 'Experimental Study'
Woven at the ATW,
wool and cotton, 10.5 x 19 cm,
\$100 SOLD



29. 'Interpretive Study'
Designed by Mike Brown,
woven at the ATW,
wool and cotton, 56 x 63 cm,
\$2,200



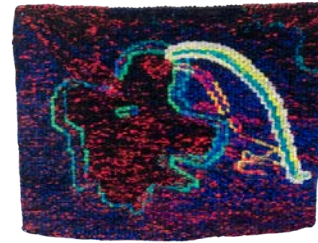
27. 'Experimental Study'
Woven at the ATW,
wool and cotton, 22 x 22.5 cm,
\$450



30. 'Red figure on purple ground'
Designed by Jon Cattapan,
woven by John Dicks,
wool and cotton, 26 x 36.5 cm,
\$1,800



31. Sample of 'Banksia' 1986
Designed by Rae Ganim,
woven at the ATW,
wool and cotton, 25 x 24 cm,
\$450 SOLD



34. 'Untitled', 2005
Designed by Irene Barberis,
woven by Emma Sulzer,
wool and cotton, 16 x 21.5 cm,
\$350



32. 'Untitled (red)', 2005
Designed by Irene Barberis,
woven by Caroline Tully,
wool and cotton, 28 x 21.5 cm,
\$500



35. 'Experimental Study'
Woven at the ATW,
wool and cotton, 12.5 x 16 cm,
\$200



33. 'Untitled', 2005
Designed by Irene Barberis,
woven by Emma Sulzer,
wool and cotton, 12 x 21.5 cm,
\$350



36. 'Untitled face pink'
Designed by Mike Brown,
woven at the ATW,
wool and cotton, 17 x 15.5 cm,
\$750



37. 'Untitled red/yellow triangle'
Designed by Mike Brown,
woven at the ATW,
wool and cotton, 14.5 x 15 cm,
\$300



38. 'Untitled', 2011
Designed by Yvonne Boag
woven by Merrill Dumbrell,
wool and cotton, 18 x 24 cm,
\$400



39. 'Kennedia', 1989
Designed by Patsy Hely,
woven by Joy Smith,
wool and cotton, 17 x 21 cm,
\$250



40. 'Interpretive Study',
woven at the ATW,
29 x 22cm, wool and cotton,
\$350 SOLD



41. 'Detail of Gleam (framed)'
Designed by Christine Johnson,
woven by Caroline Tully,
wool and cotton, 47.5 x 47.5 cm,
\$700 SOLD



42. 'Untitled'
Designed by John Bates,
woven by Saffron Gordon,
wool and cotton, 13 x 19.5 cm,
\$850



43. 'Untitled',
Designed by John Bates,
woven by Pamela Joyce,
wool and cotton, 13 x 20 cm,
\$850



44. 'Interpretive Study'
Designed by Mike Brown,
woven at the ATW,
wool and cotton, 120 x 57.5cm,
\$2,800



47. 'Study Treasure Hunt #2', 2018
Designed by Guan Wei,
woven by Jennifer Sharpe,
wool and cotton, 24 x 22 cm,
\$1,650



45. 'Ace of Spades', 2003
Designed by TextaQueen,
woven by Hilary Green,
wool and cotton, 76 x 56 cm,
\$3,300



48. 'Untitled #12', 2020
Designed by Julian Martin,
woven by Sue Batten,
wool and cotton, 14 x 21 cm,
\$1,500



46. 'Jack of Hearts', 2003
Designed by TextaQueen,
woven by Rachel Hine,
wool and cotton, 76.5 x 57 cm,
\$3,300



49. 'Untitled #9', 2020
Designed by Julian Martin,
woven by Pamela Joyce,
wool and cotton, 20 x 13 cm,
\$1,500



50. 'Untitled #1', 2020
Designed by Julian Martin,
woven by Sue Batten,
wool and cotton, 24 x 17 cm,
\$1,500



53. 'Untitled #10', 2020
Designed by Julian Martin,
woven by Pamela Joyce,
wool and cotton, 19 x 14.5 cm
\$1,500



51. 'Untitled #7', 2020
Designed by Julian Martin,
woven by Tim Gresham,
wool and cotton, 20 x 15 cm
\$1,500



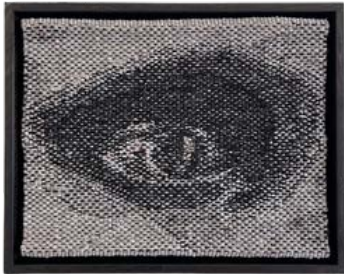
54. 'Study - Early Morning Rain', 2023
Designed by John Coburn,
woven by David Pearce,
wool and cotton, 32.5 x 42 cm,
\$2,500



52. 'Untitled #5' 2020
Designed by Julian Martin,
woven by Sue Batten,
wool and cotton, 21 x 15 cm,
\$1,500



55. 'Study - Early Morning Rain', 2023
Designed by John Coburn,
woven by Amy Cornell,
wool and cotton, 33.5 x 37 cm,
\$2,250



56. 'Miili Edition #8', 2019
Designed by Brook Andrew,
woven by Chris Cochius,
wool and cotton, 23.2 x 29.4 cm,
\$3,500

'Miili Edition #6', \$3,500 SOLD



59. 'Interpretive Study - Clouds'
Designed and woven by Merrill Dumbrell,
wool and cotton, 50 x 50 cm,
\$880



57. Elders / Kula Deiva (a) 2024, Kaimurai,
natural Indigo pigment, natural binder on
handwoven cotton tapestry woven by Pamela
Joyce, 174 x 60cm,
\$12,500



60. 'Interpretive Study - Clouds'
Designed and woven by Merrill Dumbrell,
wool and cotton, 58 x 43 cm,
\$880



58. Elders / Kula Deiva (b) 2024, Kaimurai,
natural Indigo pigment, natural binder on
handwoven cotton tapestry woven by Pamela
Joyce, 174 x 60cm, \$12,500



61. 'Interpretive Study Half Passing'
Woven by Karlie Hawking,
wool and cotton, 40 x 39 cm,
\$660



62. 'Interpretive Study Half Passing'
Woven by Leith Maguire,
wool and cotton, 39 x 39 cm,
\$660

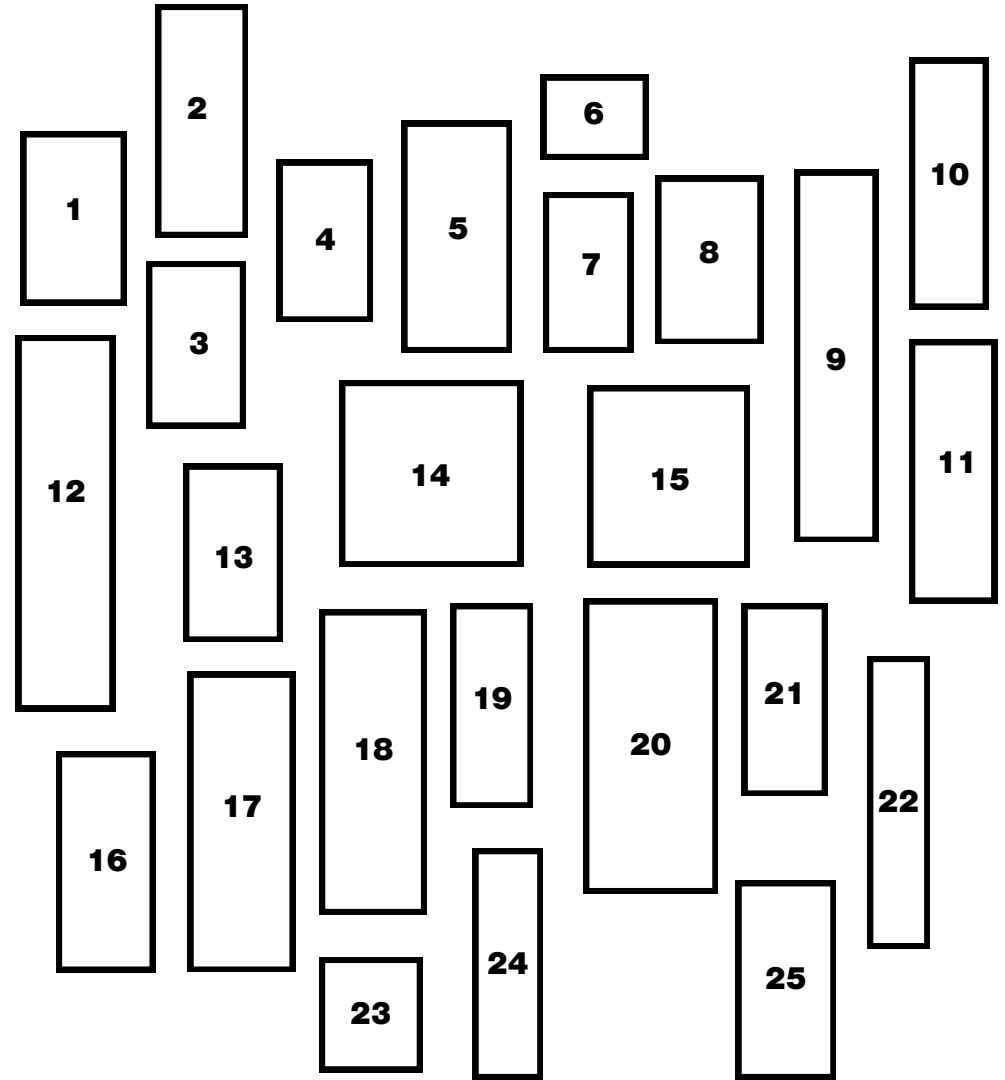
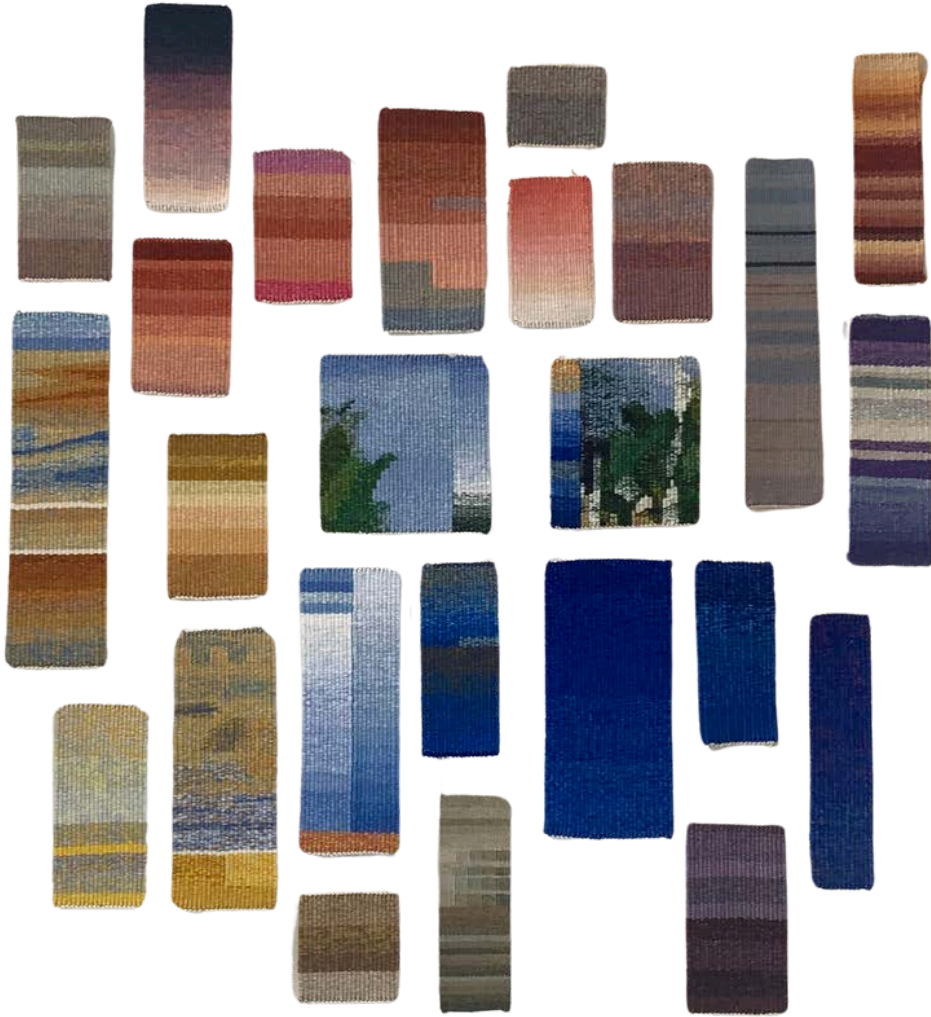


63. 'Interpretive Study Half Passing'
Woven by Sophie Morris,
wool and cotton, 40 x 37 cm,
\$660

**AUSTRALIAN
TAPESTRY
WORKSHOP**

FOR SALES CONTACT US VIA EMAIL
CONTACT@AUSTAPESTRY.COM.AU

ATW CAN ARRANGE ASSISTANCE WITH
INSTALLATION AND FRAMING. FOR FURTHER
ENQUIRIES EMAIL
FOH@AUSTAPESTRY.COM.AU
OR PHONE (03) 9699 7885



COLOUR STRIPS

- | | | | | |
|----------|-----------|-----------|-----------|-----------|
| 1. \$180 | 6. \$100 | 11. \$180 | 16. \$180 | 21. \$180 |
| 2. \$180 | 7. \$180 | 12. \$280 | 17. \$280 | 22. \$180 |
| 3. \$180 | 8. \$180 | 13. \$180 | 18. \$280 | 23. \$100 |
| 4. \$180 | 9. \$180 | 14. \$280 | 19. \$180 | 24. \$180 |
| 5. \$180 | 10. \$180 | 15. \$280 | 20. \$280 | 25. \$180 |